

American Standard



BARRIER FREE

INSTANTO™ 3.5 GPF ELONGATED FLUSH VALVE TOILET

VITREOUS CHINA

INSTANTO™ ELONGATED 3.5 GPF TOILET

- Elongated flush valve toilet
- Vitreous china
- Wall-mounted elongated bowl
- Blowout flush action
- Fully-glazed 2-5/8" trapway
- 1-1/2" inlet spud
- 100% factory flush tested

- 2512.010** Elongated bowl only, top spud
- 2511.012** Elongated bowl only, back spud
- 2513.018** Elongated bowl only, back spud with Integral Seat

Component parts:

- 047007-0070A** Inlet spud (furnished with bowl)

Nominal Dimensions:

660 x 356 x 381mm
(26" x 14" x 15")

Recommended working pressure—between
25 psi at valve when flushing and 80 psi static

Fixture only, less seat, bolt caps and flush valve

Blowout water closets are exempt from the 1.6 gallon per flush requirements of the National Energy Policy Act. However, some state and local codes do not allow the use of 3.5 gallons per flush toilets. Check local codes.

Compliance Certifications -

Meets or Exceeds the Following Specifications:

- ASME A112.19.2 for Vitreous China Fixtures

To Be Specified:

- Color: White
- Seat: Olsonite #95 open front seat less cover
- Seat: Church #9500C open front seat less cover
- Seat: Pressalit seats for American Standard, open front seat with/without cover (thermoset compound material).
- Alternate Seat:
- Flush Valve: Sloan Royal #110-3 (Top Spud)
Sloan Royal #144-3 (Back Spud)
- Alternate Flush Valve:
- Carrier Fitting (by others):

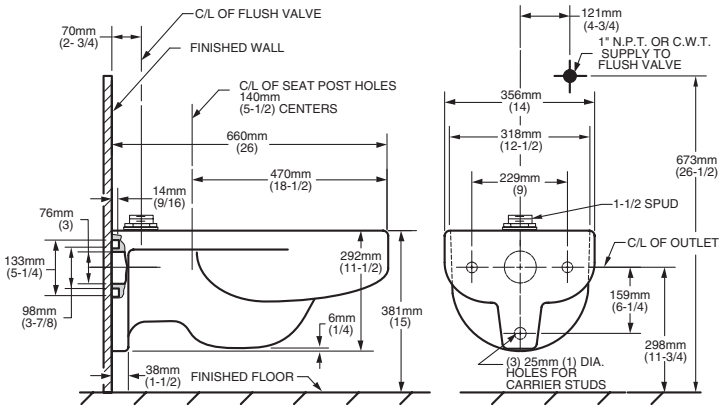


SEE REVERSE FOR ROUGHING-IN DIMENSIONS

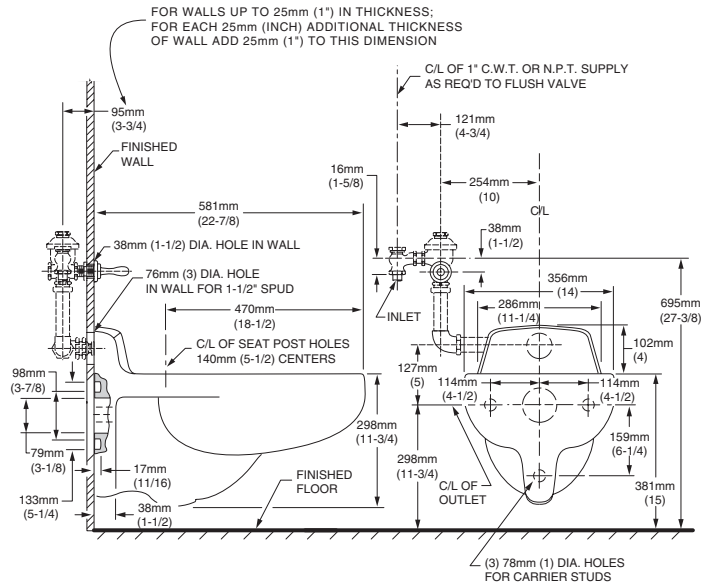


MEETS THE AMERICANS WITH DISABILITIES ACT GUIDELINES
AND ANSI A117.1 REQUIREMENTS FOR ACCESSIBLE AND USABLE
BUILDING FACILITIES - CHECK LOCAL CODES.

2512.010



2511.012



NOTES:
WASTE OUTLET SEAL RING MUST BE NEOPRENE OR GRAPHITE-FELT (WAX RING NOT RECOMMENDED).
 TO COMPLY WITH AREA CODE GOVERNING THE HEIGHT OF VACUUM BREAKER ON FLUSH VALVE, THE PLUMBER MUST VERIFY DIMENSIONS SHOWN FOR SUPPLY ROUGHING.
 SUGGEST 1/16" CLEARANCE BETWEEN FACE OF WALL AND BACK OF BOWL.
 METHOD AND MEANS OF SUPPORT TO BE FIGURED AND FURNISHED BY OTHERS.
 FLUSH VALVE NOT INCLUDED WITH FIXTURE AND MUST BE ORDERED SEPARATELY.
 PLUMBER NOTE: PROVIDE SUITABLE REINFORCEMENT FOR ALL SUPPORTS.

IMPORTANT: Dimensions of fixtures are nominal and may vary within the range of tolerances established by ANSI Standard A112.19.2. These measurements are subject to change or cancellation. No responsibility is assumed for use of superseded or voided pages.